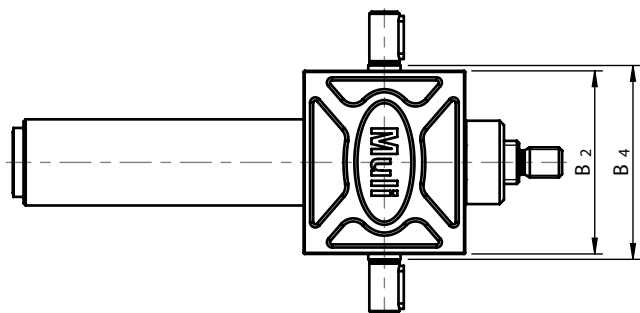
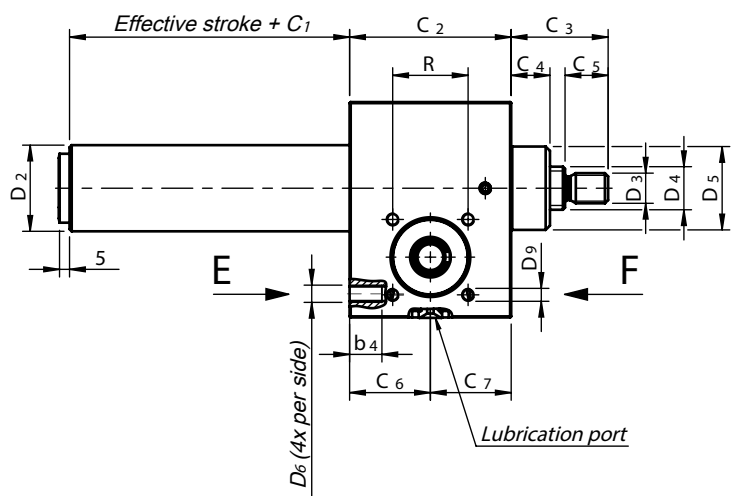
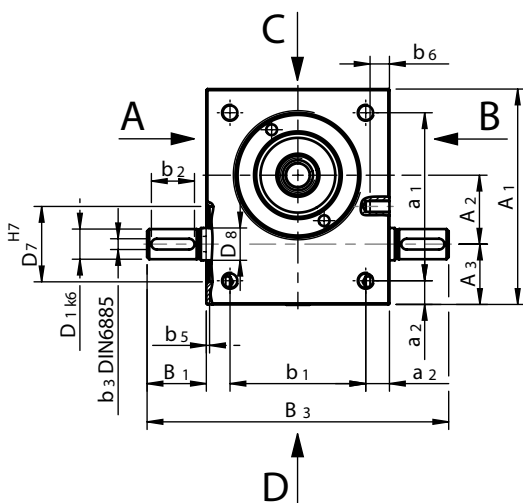


# Dimensions

## Version N and V



**Note!** If attachments are to be fitted, please specify on which side (A/B).

## Dimensions

### Version N and V

Dimensions [mm]																	
Size	A <sub>1</sub> <sup>1)</sup>	A <sub>2</sub>	A <sub>3</sub>	a <sub>1</sub>	a <sub>2</sub>	B <sub>1</sub>	B <sub>2</sub>	B <sub>3</sub>	B <sub>4</sub>	b <sub>1</sub>	b <sub>2</sub>	b <sub>3</sub>	b <sub>4</sub>	b <sub>5</sub>	C <sub>1</sub> <sup>8)</sup>	C <sub>2</sub>	C <sub>3</sub> <sup>2)3)</sup>
MULI 0	60	20	18	48	6	21	50	92	52	38	14	3	7	–	20(40)	50	27(33)
MULI 1	80	25	24	60	10	24	72	120	77	52	18	3	13	1.5	20(60)	62	35(46)
MULI 2	100	32	28	78	11	27.5	85	140	90	63	20	5	15	1.5	30(50)	75	45(48.5)
MULI 3	130	45	31	106	12	45	105	195	110	81	36	5	15	2	30(60)	82	50
MULI 4	180	63	39	150	15	47.5	145	240	150	115	36	6	16	2	45(70)	117	65
MULI 5	200	71	46	166	17	67.5	165	300	170	131	56	8	30	2.5	55(75)	160	95
JUMBO 1	210	71	49	170	20	65	195	325	200	155	56	8	40	8	55	175	95
JUMBO 2	240	80	60	190	25	67.5	220	355	225	170	56	8	45	8	60	165	110
JUMBO 3	240	80	60	190	25	67.5	220	355	225	170	56	8	45	8	60	165	110
JUMBO 4	290	100	65	230	30	65	250	380	254	190	56	10	54	8	65	220	140
JUMBO 5	360	135	75	290	35	100	300	500	305	230	90	14	80	8	90	266	200

Dimensions [mm]																	
Size	C <sub>4</sub> <sup>3)</sup>	C <sub>5</sub>	C <sub>6</sub>	C <sub>7</sub>	D <sub>1</sub> <sup>4)</sup>	D <sub>2</sub> <sup>5)</sup>	D <sub>3</sub> <sup>6)</sup>	D <sub>4</sub> TR	D <sub>4</sub> KGS	D <sub>5</sub> <sup>3)</sup>	D <sub>6</sub>	D <sub>7</sub>	D <sub>8</sub>	D <sub>9</sub> x b <sub>6</sub> <sup>7)</sup>	R(TK) <sup>3)7)</sup>	V-KGT <sup>5)</sup>	
MULI 0	12(19)	12	25	25	9 x 20	28	M8 x 1.25	14 x 4	1205	26(36)	M6	–	–	M5 x 3,5	24(34)	25 x 25	
MULI 1	12(23)	19	31	31	10 x 21.5	33	M12 x 1.75	18 x 4	1605	29.6(48)	M8	28	12	M5 x 8	32(45.25)	30 x 30	
MULI 2	18(21.5)	20	37.5	37.5	14 x 25	40	M14 x 2.0	20 x 4	2005	38.7(61)	M8	35	15	M6 x 9	35(49.5)	40 x 40	
MULI 3	23	22	41	41	16 x 42.5	50	M20 x 2.5	30 x 6	2505	46	M10	35	17	M8 x 10	44(62.2)	50 x 50	
MULI 4	32	29	58.5	58.5	20 x 45	60	M30 x 3.5	40 x 7	4005/4010	60	M12	52	25	M10 x 14	55(77.8)	60 x 60	
MULI 5	40	48	80	80	25 x 65	82	M36 x 4	55 x 9	5010	85	M20	52	28	M12 x 16	60(84.85)	80 x 80	
JUMBO 1	40	48	87.5	87.5	25 x 62.5	90	M48 x 2	60 x 9	–	90	M24	52	28	M12 x 16	60(84.85)	–	
JUMBO 2	40	58	82.5	82.5	30 x 65	115	M56 x 2	70 x 10	–	105	M30	58	32	M12 x 18	(80)	–	
JUMBO 3	40	58	82.5	82.5	30 x 65	115	M64 x 3	80 x 10	8010	120	M30	58	32	M12 x 18	(80)	120 x 120	
JUMBO 4	50	78	106	114	35 x 62.5	150	M72 x 3	100 x 10	–	145	M36	85	40	–	–	–	
JUMBO 5	60	118	133	133	48 x 97.5	180	M100 x 3	120 x 14	–	170	M42	90	50	–	–	–	

Note: Subject to change without prior notice.

<sup>1)</sup> Dimension A1 for Muli 0–2 to DIN 1688-T1/GTA 16, from MULI3 to DIN 1685 GTB 18

<sup>2)</sup> This dimension refers to the closed height and represents a minimum. It must be increased if bellows are used (see page 40-41).

<sup>3)</sup> The values in brackets refer to version with ball screw

<sup>4)</sup> Diameter and length to shoulder.

<sup>5)</sup> Square protection pipe for Muli0-V-TGS/KGS and for ball screw as anti-rotation device (see V-KGT).

<sup>6)</sup> In accordance to DIN 13 screw thread: MULI. In accordance to DIN 13 fine pitch thread: JUMBO.

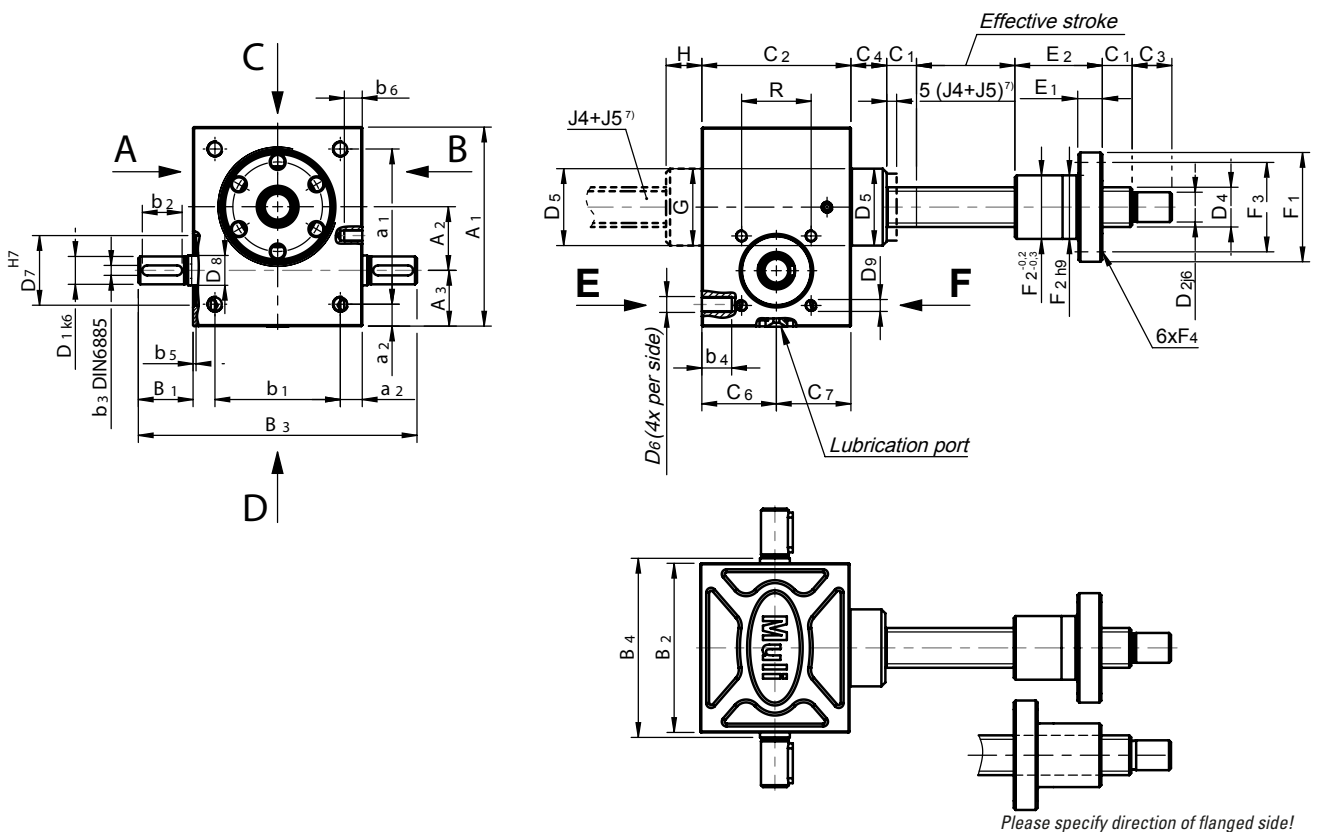
<sup>7)</sup> JUMBO 2 & 3 only 3 holes. JUMBO 4 & 5 without holes.

<sup>8)</sup> The value in brackets refer to if square protective tube is used.



# Dimensions

## Version R



**Note!** If attachments are to be fitted, please specify on which side (A/B).

## Dimensions

### Version R

Dimensions [mm]																				
Size	A <sub>1</sub> <sup>1)</sup>	A <sub>2</sub>	A <sub>3</sub>	a <sub>1</sub>	a <sub>2</sub>	B <sub>1</sub>	B <sub>2</sub>	B <sub>3</sub>	B <sub>4</sub>	b <sub>1</sub>	b <sub>2</sub>	b <sub>3</sub>	b <sub>4</sub>	b <sub>5</sub>	C <sub>1</sub>	C <sub>2</sub>	C <sub>3</sub>	C <sub>4</sub>	C <sub>6</sub>	C <sub>7</sub>
MULI 0	60	20	18	48	6	21	50	92	52	38	14	3	12	—	10	50	12	12	25	25
MULI 1	80	25	24	60	10	24	72	120	77	52	18	3	13	1.5	12	62	15	12	31	31
MULI 2	100	32	28	78	11	27.5	85	140	90	63	20	5	15	1.5	15	75	20	18	37.5	37.5
MULI 3	130	45	31	106	12	45	105	195	110	81	36	5	15	2	20	82	25	23	41	41
MULI 4	180	63	39	150	15	47.5	145	240	150	115	36	6	16	2	25	117	30	32	58.5	58.5
MULI 5	200	71	46	166	17	67.5	165	300	170	131	56	8	30	2.5	25	160	45	40	80	80
JUMBO 1	210	71	49	170	20	65	195	325	200	155	56	8	40	8	25	175	55	40	87.5	87.5
JUMBO 2	240	80	60	190	25	67.5	220	355	225	170	56	8	45	8	25	165	70	40	82.5	82.5
JUMBO 3	240	80	60	190	25	67.5	220	355	225	170	56	8	45	8	25	165	75	40	82.5	82.5
JUMBO 4	290	100	65	230	30	65	250	380	255	190	56	10	54	8	25	220	100	50	106	114
JUMBO 5	360	135	75	290	35	100	300	500	305	230	90	14	80	8	30	266	120	60	133	133

Dimensions [mm]																		
Size	D <sub>1</sub> <sup>2)</sup>	D <sub>2</sub>	D <sub>4</sub> TR	D <sub>4</sub> KGS	D <sub>5</sub>	D <sub>6</sub>	D <sub>7</sub>	D <sub>8</sub>	D <sub>9</sub> x b <sub>6</sub> <sup>5)</sup>	R(TK) <sup>6)</sup>	E <sub>1</sub> <sup>3)</sup>	E <sub>2</sub> <sup>3)</sup>	F <sub>1</sub> <sup>3)4)</sup>	F <sub>2</sub> <sup>3)4)</sup>	F <sub>3</sub> <sup>3)4)</sup>	F <sub>4</sub> <sup>3)4)</sup>	G <sup>7)</sup>	H <sup>7)</sup>
MULI 0	9 x 20	8	14 x 4	1205	26	M6	—	—	M5 x 3,5	24 (34)	12/10	35/42	48/40	28/24	38/34	6/4,5	—	—
MULI 1	10 x 21.5	12	18 x 4	1605	29.6	M8	28	12	M5 x 8	32 (45.25)	12/12	44/44	48/48	28/28	38/38	6/5.5	—	—
MULI 2	14 x 25	15	20 x 4	2005	38.7	M8	35	15	M6 x 9	35 (49.5)	12/12	44/44	55/55	32/32	45/45	7/7	—	—
MULI 3	16 x 42.5	20	30 x 6	2505	46	M10	35	17	M8 x 10	44 (62.2)	14/14	46/46	62/62	38/38	50/50	7/7	—	—
MULI 4	20 x 45	25	40 x 7	4005/4010	60	M12	52	25	M10 x 14	55 (77.8)	16/16	73/59	95/80	63/53	78/68	9/7	—	—
MULI 5	25 x 65	40	55 x 9	5010	85	M20	52	28	M12 x 16	60 (84.85)	18/18	97/97	110/110	72/72	90/90	11/11	—	—
JUMBO 1	25 x 62.5	45	60 x 9	—	90	M24	52	28	M12 x 16	60 (84.85)	20	99	125	85	105	11	—	—
JUMBO 2	30 x 65	55	70 x 10	—	105	M30	58	32	M12 x 18	(80)	30	100	180	95	140	17	—	—
JUMBO 3	30 x 65	60	80 x 10	8010	120	M30	58	32	M12 x 18	(80)	30/22	110/101	190/145	105/105	150/125	17/14	—	—
JUMBO 4	35 x 62.5	80	100 x 10	—	145	M36	85	40	—	—	35	130	240	130	185	25	145	50
JUMBO 5	48 x 97.5	95	120 x 14	—	170	M42	90	50	—	—	40	160	300	160	230	28	170	60

Note: Subject to change without prior notice.

<sup>1)</sup> Dimension A1 for Muli 0–2 to DIN 1688-T1/GTA 16, from MULI3 to DIN 1685 GTB 18

<sup>2)</sup> Diameter and length to shoulder

<sup>3)</sup> The first values in the table apply to the trapezoidal nut EFM. For dimension 4010 the first values in the table are valid!

<sup>4)</sup> The second values in the table apply to the flanged ball nut KGF

<sup>5)</sup> JUMBO 2 + 3 only 3 holes; JUMBO 4 + 5 without holes.

<sup>6)</sup> JUMBO 4 + 5 holes upon request, only.

<sup>7)</sup> JUMBO 4 + 5 screw exit on side E, bearing cover on side F.